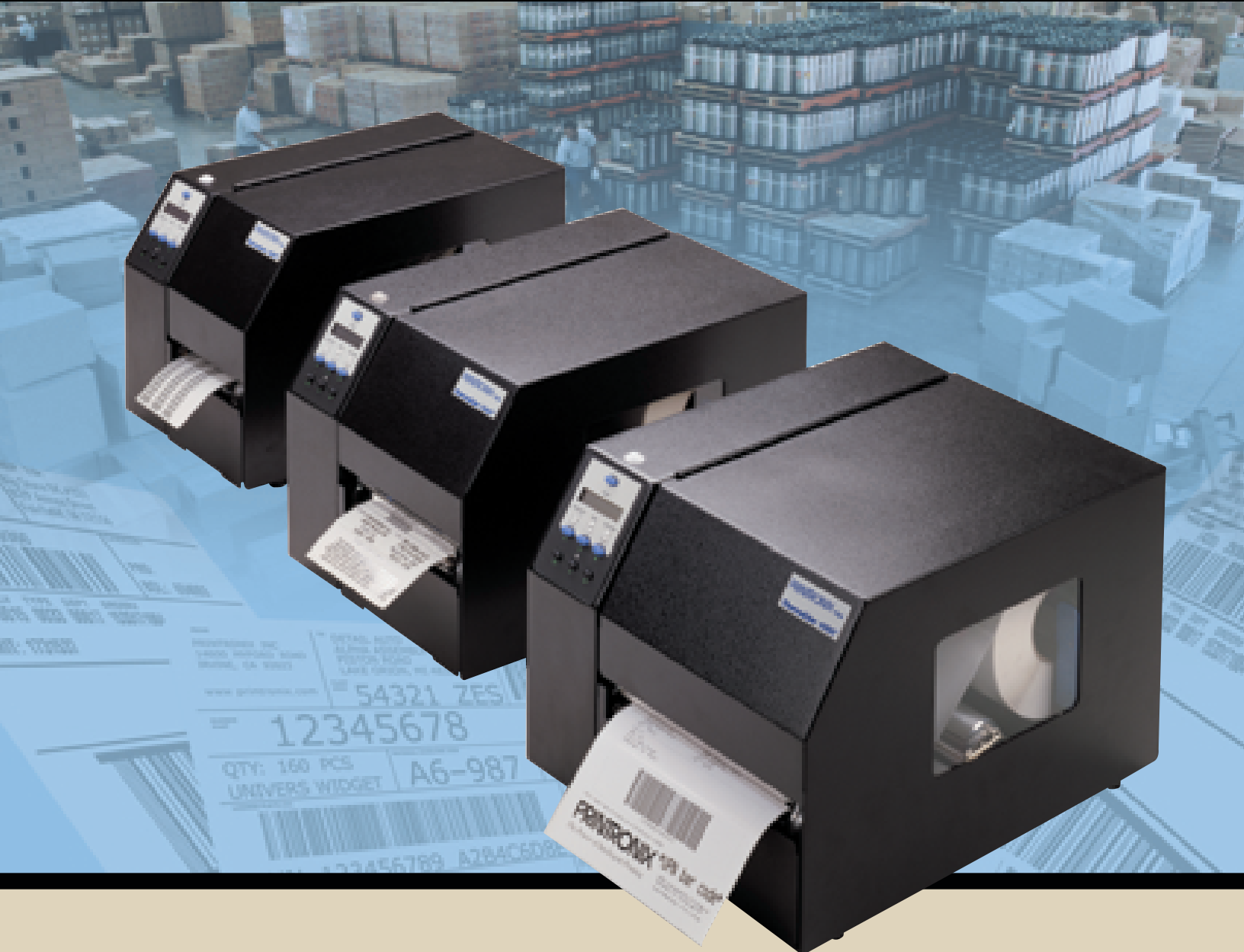


# PRINTRONIX®

GLOBAL PRINTING...ENABLED.

## PRINTRONIX T5000<sup>e</sup> – THERMAL BARCODE PRINTERS



*The new standard in thermal printing.*

Printronix presents the ultimate bar coding solution – the **T5000<sup>e</sup>**. This best-of-breed printer provides unique value to enterprise users because it helps customers at the point of their supply chain printing needs. Designed specifically for the high-volume applications found in distribution centers and factory floors, the **T5000<sup>e</sup>** brings customers increased productivity, faster response times, improved product flow and enhanced profitability.



# PRINTRONIX T5000<sup>e</sup> – THERMAL BARCODE PRINTERS

## RELIABLE PRINTERS

The **T5000<sup>e</sup>** thermal printer, the perfect label printing solution, offers a wide range of features designed to make batch or on-demand label printing convenient and efficient in mission critical applications.

- Rugged aluminum die-casting and precision mechanical components with proven reliability for handling the toughest industrial environments
- Side-loading media path for easy loading, cleaning and maintenance
- Ventless system for operation in environments with airborne particulate matter without compromising performance
- Unique dual-motor driven ribbon system reduces ribbon wrinkle, eliminates clutches and allows for reverse feed and media usage management
- Extra-long 625-meter ribbon capacity provides high efficiency with minimum user intervention
- Easily replaceable and interchangeable 203DPI and 300DPI print heads
- Wireless/Ethernet option provides real-time data access and flexibility of local printing
- Optional external interface provides greater flexibility in the control of external devices, such as applicators



**4" T5204<sup>e</sup>/T5304<sup>e</sup>**  
203DPI to 300DPI



**6" T5206<sup>e</sup>/T5306<sup>e</sup>**  
203DPI to 300DPI



**8" T5208<sup>e</sup>/T5308<sup>e</sup>**  
203DPI to 300DPI

What sets the **T5000<sup>e</sup>** apart from other thermal printers is its wide range of reliable solutions that can lower your operating costs and improve your response to market needs.

## RFID SMART LABEL PRINTING

Printronix offers comprehensive and best of breed printing solutions for RFID Smart Labels. Start your RFID development efforts with the Smart Label Developer's Kit. This comprehensive set of tools integrated with our Thermal, RFID UHF Printer, will help you fast track your RFID pilot program by creating a complete smart label developer's environment. When you are ready to expand your pilot to multiple RFID printers, the Smart Label Pilot Printer has been created to help expand your testing and process development. We have also developed Printronix Genuine Smart Labels in partnership with Alien Technology to support your ongoing RFID program needs.

## FLEXIBLE PRINT MANAGEMENT – THE WIRELESS T5000<sup>e</sup>

What sets the **T5000<sup>e</sup>** apart from other thermal printers is its wide range of reliable solutions that can lower your operating costs and improve your response to market needs.

In today's just-in-time manufacturing and logistics environments, barcoded labels must be printed when and where needed. Hard-cabling printers, even with Ethernet, may not be efficient or responsive to your production needs.

Equipped with the exclusive Printronix Dual Wireless/Ethernet option, the Printronix wireless **T5000<sup>e</sup>** provides you with flexible print management from any PC in the world. Once installed in a wireless network, and powered by PrintNet Enterprise, this unique technology:

- Allows printing of real-time data in any location
- Eliminates time-consuming and expensive re-configuration of hard-cabled systems when warehouse or manufacturing floor changeovers occur
- Provides centralized control, consistency, and diagnostics previously available only in hard-cabled PrintNet Enterprise-managed systems

## INTEGRATION INTO LEGACY AND PROPRIETARY LANGUAGE ENVIRONMENTS

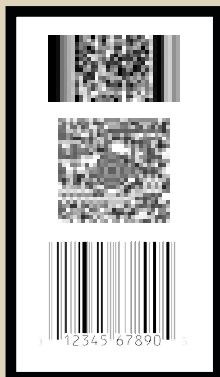
Printronix provides tools that enable the **T5000<sup>e</sup>** to integrate seamlessly into virtually any proprietary language environment. This enables greater barcode labeling efficiency, and ultimately, a link to higher performance and reliability in the delivery cycle of your products. Printronix Printer Interpreter (PPI) integrates **T5000<sup>e</sup>** printers into Zebra and TEC installations easily. Once integrated, they maintain all capabilities used in a Printronix environment:

- Fully specified speed operation
- Fully enabled PrintNet Enterprise
- Fully operational Online Data Validation
- Fully operational TN5250 / 3270
- Complete compatibility across all Printronix printer technologies
- Ability to write new applications in PGL

## T5000<sup>e</sup> APPLICATIONS

The **T5000<sup>e</sup>** meets your compliance labeling requirements for any of the following applications:

- Inventory & asset labeling
- Shipping labels
- Material handling
- Work-in-process
- Receiving and cross-docking
- Hazardous (HAZMAT) material labeling
- Product marking



## THE T5000<sup>e</sup> MOBILE PRINT SYSTEM

Bar coding applications can be put into place anywhere, any time. Combining the wireless T5000<sup>e</sup> with a rugged industrial cart delivers thermal bar coding directly to locations that need it most. The T5000<sup>e</sup>, which increases efficiency in high-volume environments, includes:

- An ergonomically designed cart with a durable steel frame and heavy-duty wheels for maximum maneuverability and minimal maintenance
- Unique T5000<sup>e</sup> features, including PrintNet® Enterprise and ODV™
- Critical features, such as battery-life warning, which are integrated with PrintNet Enterprise and fully visible to operators



## REMOTE PRINTER MANAGEMENT – PRINTNET® ENTERPRISE

Successful organizations are flexible enough to meet new requirements in a changing marketplace. PrintNet Enterprise provides this flexibility by placing total control of worldwide print operations in your IT network manager's hands. By combining a fully integrated Ethernet adapter and Java-based remote management software, this remote printer management tool provides:



**INSTANT VISIBILITY** – Simultaneous status of every managed Printronix printer anywhere in the world, plus full visibility via HP Open View, Tivoli and other printer management software.

**INSTANT ALERTS** – Immediate notification of error conditions and “dead printer” status to key personnel via email, pager and/or cell phone alert.

**INSTANT CONTROL** – Maintenance of saved configurations for consistency of configuration and performance across the enterprise. Broadcasts simultaneous firmware updates to any number of printers automatically.

**INSTANT PRINTER ORGANIZATION** – Common group printer organization by application, print technology, manufacturing plant, geography or distribution center location.

**INSTANT DIAGNOSTICS** – Authorized users can access print management information from anywhere in the world via the Web.

**FLEXIBLE PRINT SERVER** – Assignment of up to eight unique application names and configurations to an individual printer.

## ETHERNET MIGRATION – PRINTRONIX TN5250 / 3270 ETHERNET OPTION

As the market moves towards 100 Base-T and 1 Gigabit Ethernet, maintaining an out-dated Twinax or Coax network becomes increasingly difficult to justify. Yet, two powerful factors impair this migration:

- Legacy applications must be changed
- Twinax or Coax print systems provide a high level of print job control

The Printronix TN5250 / 3270 Ethernet Option maintains the job control and visibility of Twinax or Coax networks, yet combines it with the speed and efficiency of Ethernet. This optional solution provides:

- Significant cost savings when integrating industrial printing with existing Ethernet architecture
- Complete compatibility with existing applications
- Same high level of job control obtained with Twinax or Coax networks

In addition, the TN5250 / 3270 job control provides:

- Automatic confirmation of which pages have and have not printed
- Knowledge of exactly where an error has occurred in batch printing
- Ability to restart printing on only those pages needed
- Full access to all the features and functionality of PrintNet Enterprise

## BARCODE QUALITY ASSURANCE – PRINTRONIX ONLINE DATA VALIDATION (ODV)

Barcode labels are a vital link in your production cycle – and a key factor to your business success. Unreadable barcodes reduce efficiency, resulting in delayed response to market needs, non-compliance fines and lagging production lines.

Online Data Validation analyzes each barcode to ensure it meets stringent scanning standards. This 100 percent inspection of every label validates the symbology specifications of both linear and PDF417 barcode images. Unreadable barcode labels are cancelled and good replacement labels are printed automatically.

ODV Data Manager, when combined with ODV and PrintNet Enterprise, is the Printronix solution for fully automated barcode quality control. ODV Data Manager:

- Captures and displays all barcode quality data, by label and barcode
- Captures and displays detailed validation information and actual data within each barcode
- Views all data online and stores it in a file or exports it to a database in real time
- Places printers into fault conditions for either barcode quality or data failures



